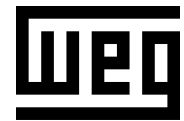


DATA SHEET



Three Phase Induction Motor - Squirrel Cage

Customer		: 02512ST3QIE324TC-W22							
Product line		: W22 IEEE 841 NEMA Premium Efficiency Three-Phase				Product code :		12447791	
						Catalog # :		02512ST3QIE324TC-W22	
Frame : 324/6TC Output : 25 HP (18.5 kW) Poles : 6 Frequency : 60 Hz Rated voltage : 460 V Rated current : 30.4 A L. R. Amperes : 182 A LRC : 6.0x(Code G) No load current : 12.5 A Rated speed : 1175 rpm Slip : 2.08 % Rated torque : 110 ft.lb Locked rotor torque : 210 % Breakdown torque : 250 % Insulation class : F Service factor : 1.25 Moment of inertia (J) : 11.5 sq.ft.lb Design : B					Locked rotor time : 46s (cold) 26s (hot) Temperature rise : 80 K Duty cycle : Cont.(S1) Ambient temperature : -20°C to +40°C Altitude : 1000 m.a.s.l. Protection degree : IP55 Cooling method : IC411 - TEFC Mounting : F-1 Rotation ¹ : Both (CW and CCW) Noise level ² : 62.0 dB(A) Starting method : Direct On Line Approx. weight ³ : 567 lb				
Output		25%	50%	75%	100%	Foundation loads			
Efficiency (%)		91.4	91.7	93.0	93.0	Max. traction : 957 lb			
Power Factor		0.41	0.65	0.77	0.82	Max. compression : 1523 lb			
		<u>Drive end</u> Bearing type : 6312 C3 Sealing : Inpro/Seal Lubrication interval : 20000 h Lubricant amount : 21 g Lubricant type : Mobil Polyrex EM				<u>Non drive end</u> 6212 C3 Inpro/Seal 20000 h 13 g			
Notes									
This revision replaces and cancel the previous one, which must be eliminated. (1) Looking the motor from the shaft end. (2) Measured at 1m and with tolerance of +3dB(A). (3) Approximate weight subject to changes after manufacturing process. (4) At 100% of full load.						These are average values based on tests with sinusoidal power supply, subject to the tolerances stipulated in NEMA MG-1.			
Rev.	Changes Summary					Performed	Checked	Date	
Performed by									
Checked by									
Date	20/11/2019							Page 1 / 6	Revision

TORQUE AND CURRENT VS SPEED CURVE

Three Phase Induction Motor - Squirrel Cage

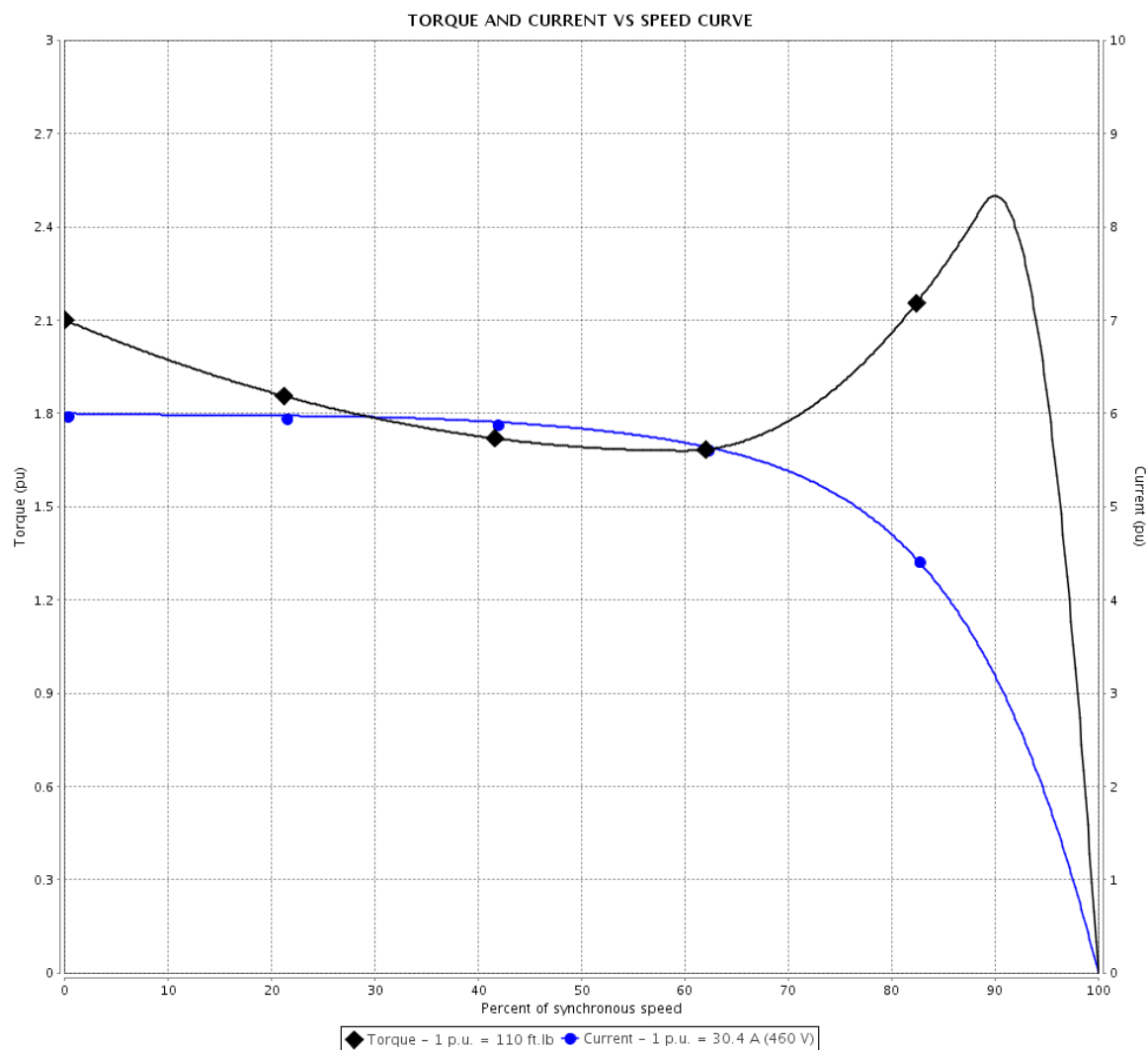


Customer : 02512ST3QIE324TC-W22

Product line : W22 IEEE 841 NEMA Premium
Efficiency Three-Phase

Product code : 12447791

Catalog # : 02512ST3QIE324TC-W22



Performance : 460 V 60 Hz 6P

Rated current : 30.4 A
LRC : 6.0
Rated torque : 110 ft.lb
Locked rotor torque : 210 %
Breakdown torque : 250 %
Rated speed : 1175 rpm

Moment of inertia (J) : 11.5 sq.ft.lb
Duty cycle : Cont.(S1)
Insulation class : F
Service factor : 1.25
Temperature rise : 80 K
Design : B

Locked rotor time : 46s (cold) 26s (hot)

Rev.	Changes Summary	Performed	Checked	Date
Performed by			Page	Revision
Checked by			2 / 6	
Date				

LOAD PERFORMANCE CURVE

Three Phase Induction Motor - Squirrel Cage

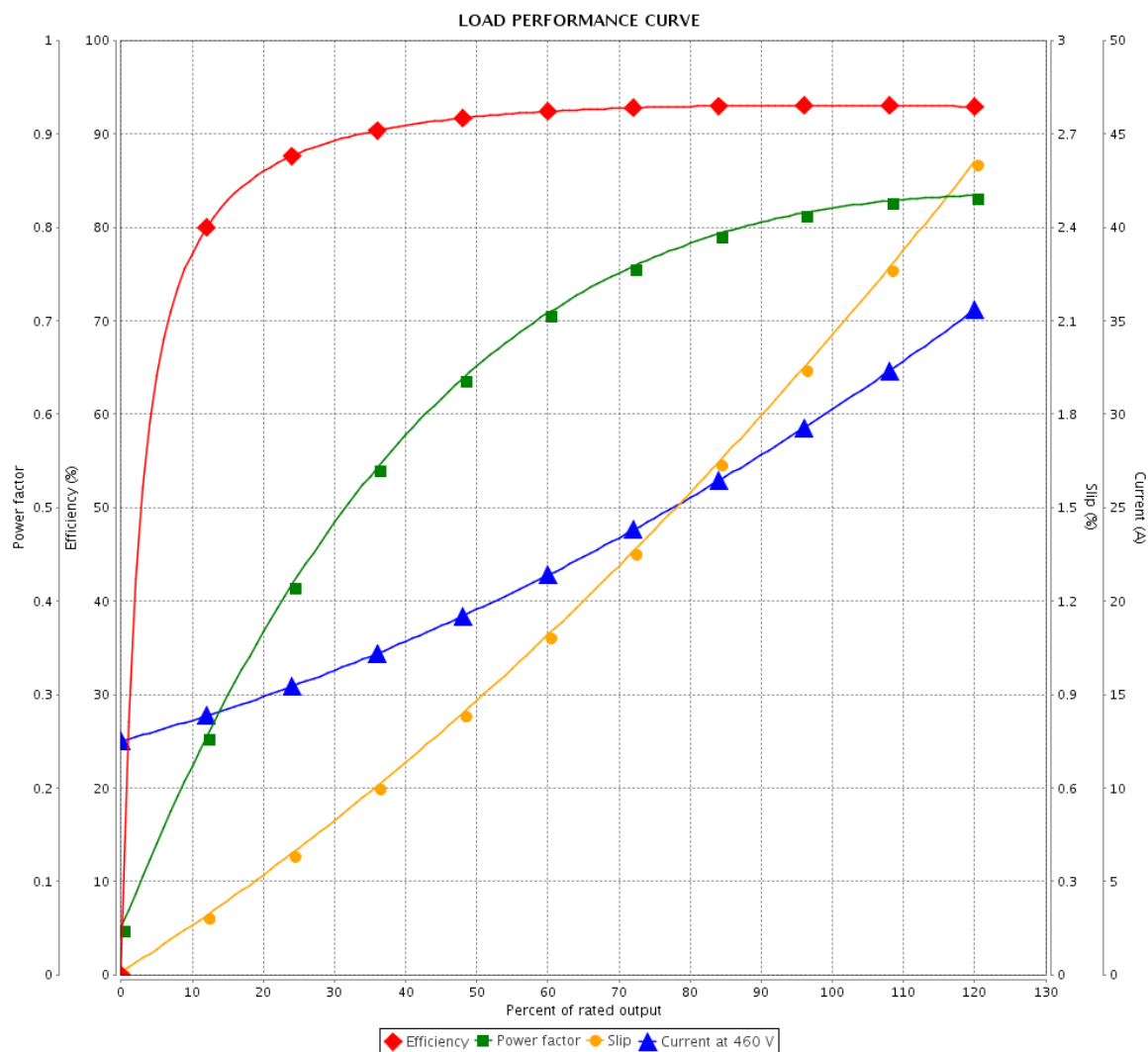


Customer : 02512ST3QIE324TC-W22

Product line : W22 IEEE 841 NEMA Premium
Efficiency Three-Phase

Product code : 12447791

Catalog # : 02512ST3QIE324TC-W22



Performance : 460 V 60 Hz 6P

Rated current : 30.4 A
LRC : 6.0
Rated torque : 110 ft.lb
Locked rotor torque : 210 %
Breakdown torque : 250 %
Rated speed : 1175 rpm

Moment of inertia (J) : 11.5 sq.ft.lb
Duty cycle : Cont.(S1)
Insulation class : F
Service factor : 1.25
Temperature rise : 80 K
Design : B

Rev.	Changes Summary	Performed	Checked	Date
Performed by				Page
Checked by				Revision
Date				3 / 6
	20/11/2019			

THERMAL LIMIT CURVE



Three Phase Induction Motor - Squirrel Cage

Customer : 02512ST3QIE324TC-W22

Product line : W22 IEEE 841 NEMA Premium
Efficiency Three-Phase

Product code : 12447791

Catalog # : 02512ST3QIE324TC-W22

Performance : 460 V 60 Hz 6P

Rated current : 30.4 A
LRC : 6.0
Rated torque : 110 ft.lb
Locked rotor torque : 210 %
Breakdown torque : 250 %
Rated speed : 1175 rpm

Moment of inertia (J) : 11.5 sq.ft.lb
Duty cycle : Cont.(S1)
Insulation class : F
Service factor : 1.25
Temperature rise : 80 K
Design : B

Heating constant

Cooling constant

Rev.	Changes Summary	Performed	Checked	Date
Performed by		Page Revision 4 / 6		
Checked by				
Date	20/11/2019			

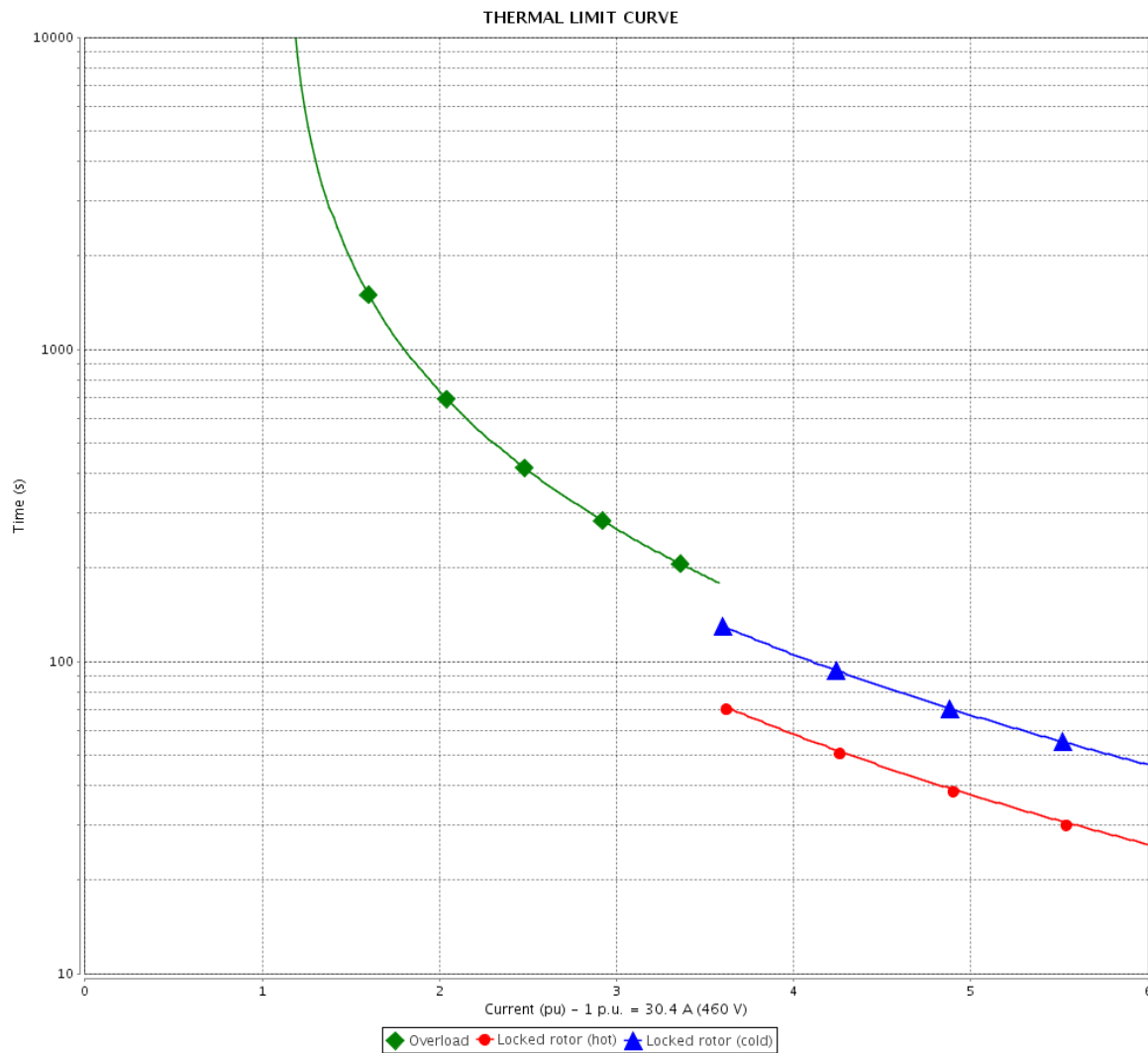
THERMAL LIMIT CURVE

Three Phase Induction Motor - Squirrel Cage



Customer

: 02512ST3QIE324TC-W22



Rev.	Changes Summary		Performed	Checked	Date
Performed by					
Checked by					
Date	20/11/2019				
			Page 5 / 6	Revision	

VFD OPERATION CURVE



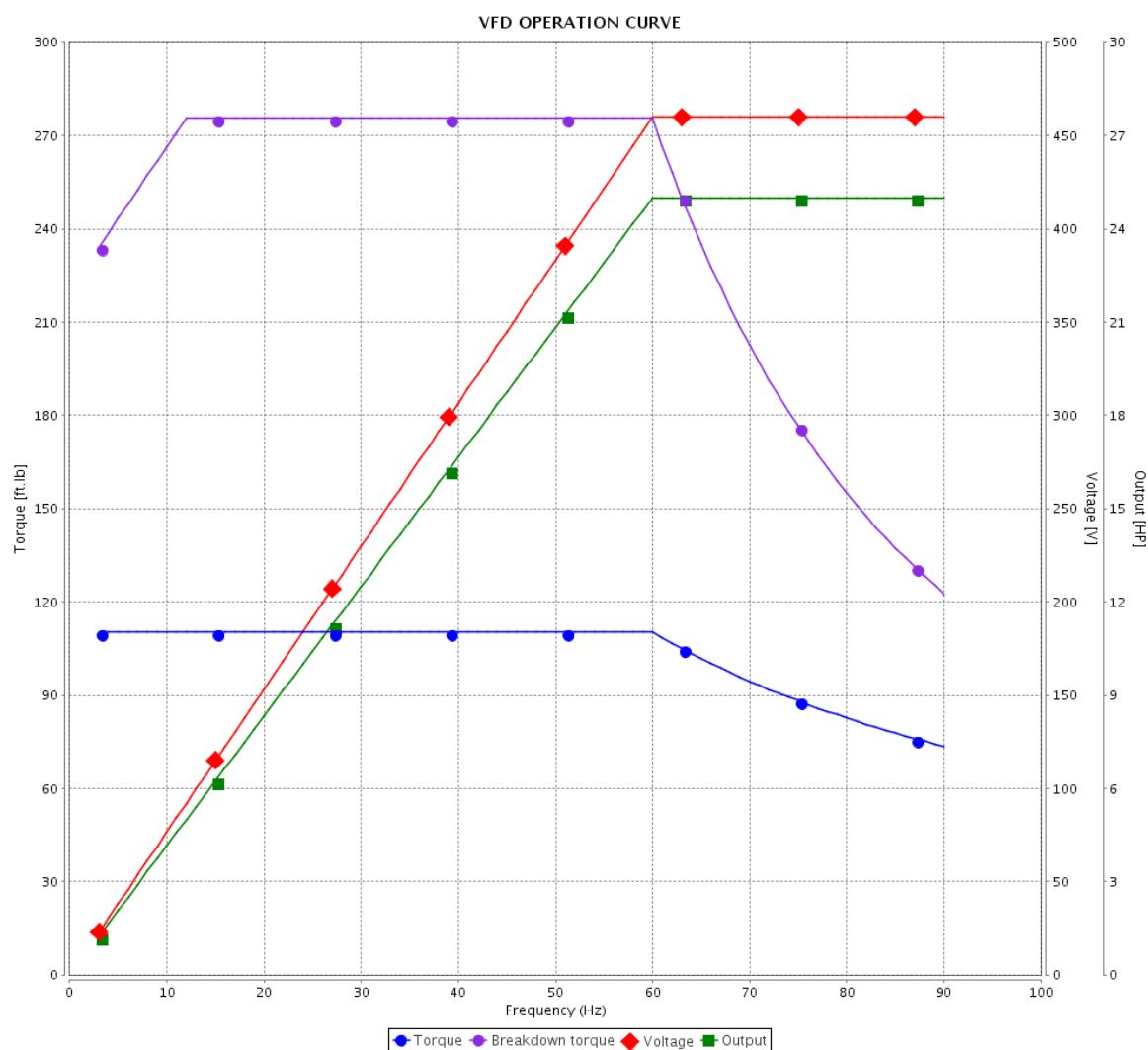
Three Phase Induction Motor - Squirrel Cage

Customer : 02512ST3QIE324TC-W22

Product line : W22 IEEE 841 NEMA Premium
Efficiency Three-Phase

Product code : 12447791

Catalog # : 02512ST3QIE324TC-W22

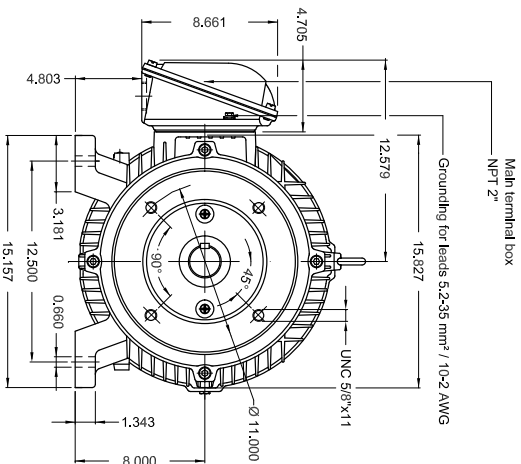


Performance : 460 V 60 Hz 6P

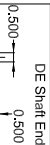
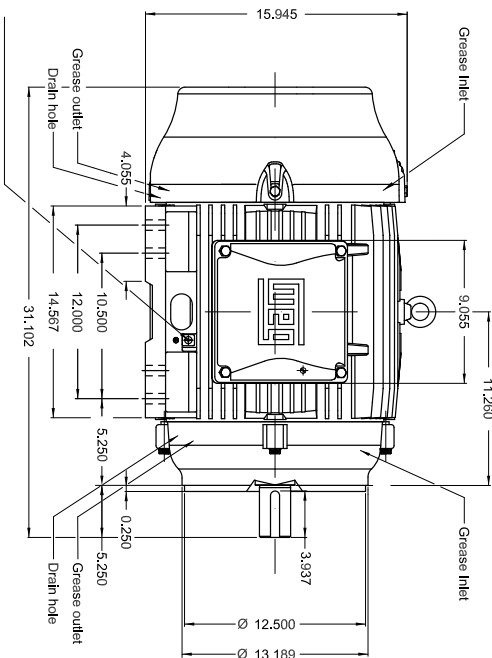
Rated current : 30.4 A
LRC : 6.0
Rated torque : 110 ft.lb
Locked rotor torque : 210 %
Breakdown torque : 250 %
Rated speed : 1175 rpm

Moment of inertia (J) : 11.5 sq.ft.lb
Duty cycle : Cont.(S1)
Insulation class : F
Service factor : 1.25
Temperature rise : 80 K
Design : B

Rev.	Changes Summary	Performed	Checked	Date
Performed by		<div>Page</div> <div>Revision</div>		
Checked by				
Date	20/11/2019			



Grounding for leads 5.2-35 mm² / 10-2 AWG



25 HP 06 Poles 60Hz

A

ECM	LOC	SUMMARY OF MODIFICATIONS	EXECUTED	CHECKED	RELEASED	DATE	VER
EXECUTED	PREWUSER	THREE PH. W22 NEMA P EFF MOTOR IECEB41					
CHECKED		FRAME 3246TC P55 TFC					
RELEASED							
REL DT.	WMO	Jungius do Sul	Product Engineering				

Color RAL 5009

Painting plan 202E

Mounting B34R(D)

PREVIEW

WDD

1 / 1

