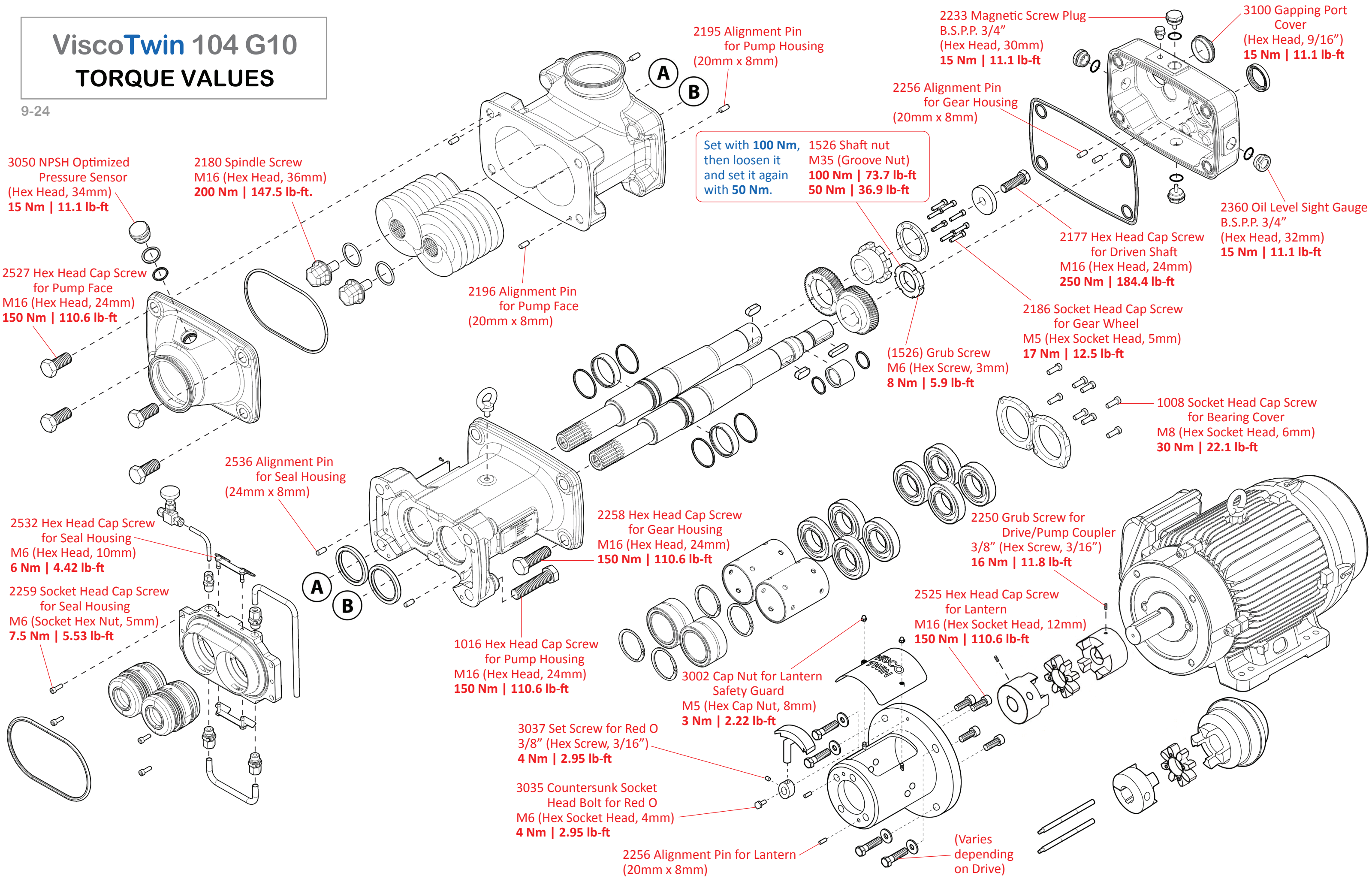


# ViscoTwin 104 G10

## TORQUE VALUES

9-24



3050 NPSH Optimized Pressure Sensor (Hex Head, 34mm)  
**15 Nm | 11.1 lb-ft**

2180 Spindle Screw M16 (Hex Head, 36mm)  
**200 Nm | 147.5 lb-ft.**

2527 Hex Head Cap Screw for Pump Face M16 (Hex Head, 24mm)  
**150 Nm | 110.6 lb-ft**

2532 Hex Head Cap Screw for Seal Housing M6 (Hex Head, 10mm)  
**6 Nm | 4.42 lb-ft**

2259 Socket Head Cap Screw for Seal Housing M6 (Socket Hex Nut, 5mm)  
**7.5 Nm | 5.53 lb-ft**

2536 Alignment Pin for Seal Housing (24mm x 8mm)

1016 Hex Head Cap Screw for Pump Housing M16 (Hex Head, 24mm)  
**150 Nm | 110.6 lb-ft**

3037 Set Screw for Red O 3/8" (Hex Screw, 3/16")  
**4 Nm | 2.95 lb-ft**

3035 Countersunk Socket Head Bolt for Red O M6 (Hex Socket Head, 4mm)  
**4 Nm | 2.95 lb-ft**

2256 Alignment Pin for Lantern (20mm x 8mm)

Set with **100 Nm**, then loosen it and set it again with **50 Nm**.

1526 Shaft nut M35 (Groove Nut)  
**100 Nm | 73.7 lb-ft**  
**50 Nm | 36.9 lb-ft**

2258 Hex Head Cap Screw for Gear Housing M16 (Hex Head, 24mm)  
**150 Nm | 110.6 lb-ft**

3002 Cap Nut for Lantern Safety Guard M5 (Hex Cap Nut, 8mm)  
**3 Nm | 2.22 lb-ft**

2195 Alignment Pin for Pump Housing (20mm x 8mm)

2196 Alignment Pin for Pump Face (20mm x 8mm)

2256 Alignment Pin for Gear Housing (20mm x 8mm)

(1526) Grub Screw M6 (Hex Screw, 3mm)  
**8 Nm | 5.9 lb-ft**

2525 Hex Head Cap Screw for Lantern M16 (Hex Socket Head, 12mm)  
**150 Nm | 110.6 lb-ft**

2233 Magnetic Screw Plug B.S.P.P. 3/4" (Hex Head, 30mm)  
**15 Nm | 11.1 lb-ft**

3100 Gapping Port Cover (Hex Head, 9/16")  
**15 Nm | 11.1 lb-ft**

2177 Hex Head Cap Screw for Driven Shaft M16 (Hex Head, 24mm)  
**250 Nm | 184.4 lb-ft**

2186 Socket Head Cap Screw for Gear Wheel M5 (Hex Socket Head, 5mm)  
**17 Nm | 12.5 lb-ft**

1008 Socket Head Cap Screw for Bearing Cover M8 (Hex Socket Head, 6mm)  
**30 Nm | 22.1 lb-ft**

2250 Grub Screw for Drive/Pump Coupler 3/8" (Hex Screw, 3/16")  
**16 Nm | 11.8 lb-ft**

(Varies depending on Drive)

2360 Oil Level Sight Gauge B.S.P.P. 3/4" (Hex Head, 32mm)  
**15 Nm | 11.1 lb-ft**